

## Week 50 Highlights

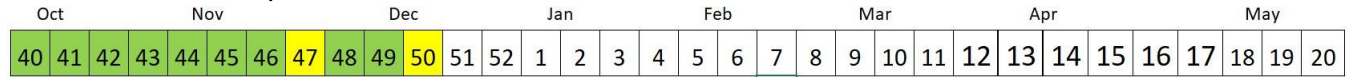
*The weekly Influenza Watch summarizes the flu surveillance in the City of Cleveland. The metrics in this report include the number and percentage of emergency department visits for influenza-like illness, confirmed hospitalizations for the flu, and the deaths each week due to pneumonia and influenza.*

- This week, flu activity is classified as “moderate”
- 6.55% of the deaths reported were due to pneumonia. No influenza deaths were reported this week, and there has been one influenza death so far this season.
- There were 13 confirmed cases of influenza-associated hospitalization reported this week. There have been 44 influenza-associated hospitalizations so far this season.
- 2.07% of emergency department visits were for flu-like illness

**Flu Intensity:** Moderate



### Seasonal Flu Intensity



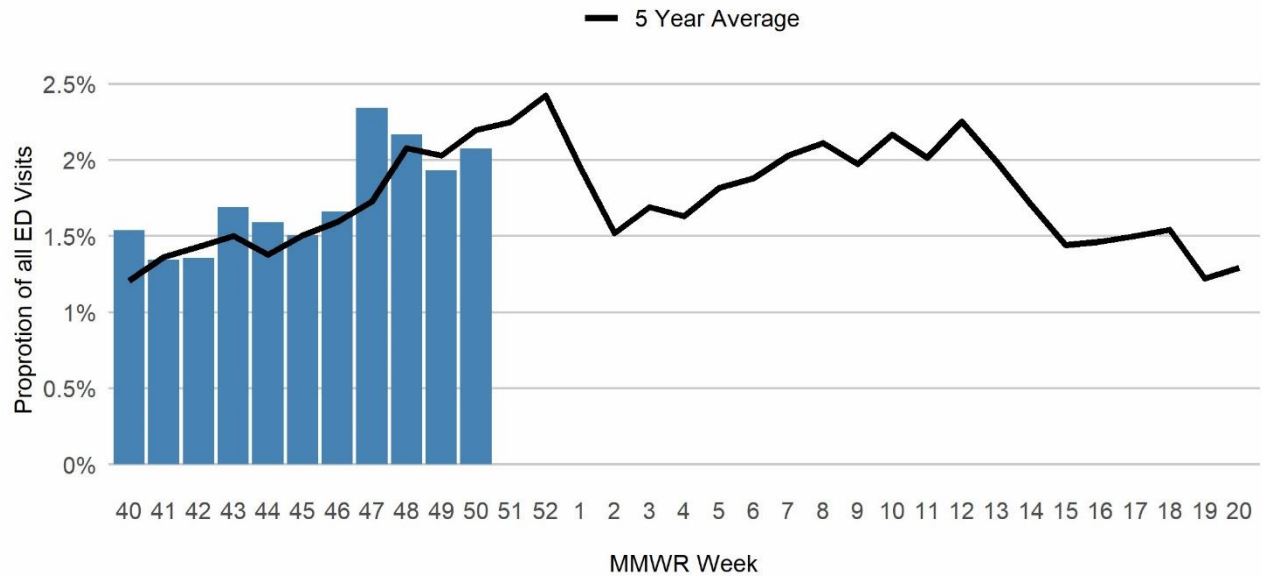
COVID-19 & Influenza (Flu) Intensity Indicators	This Week n (%)	Activity Compared to Last Week	Season Total n (%)
Emergency Department visits for Influenza-Like Illnesses	86 (2.07%)	+0.14%	774 (1.74%)
Confirmed Influenza Hospitalizations <sup>‡</sup>	13	+2	44
Confirmed COVID-19 Hospitalizations	6	-3	81
Pneumonia- & Influenza-Related Deaths	19 (6.55%)	+0.67%	162 (4.97%)

\*Deaths represent all deaths for Cuyahoga County. All other data presented are City of Cleveland-specific. Data are preliminary and subject to change as more information is gained.

The three indicators for calculating the intensity thresholds are based [on 2017 methodology from the Centers for Disease Control and Prevention.](#)

Influenza-Like Illnesses

**Influenza ED Visits 2023-2024 by Week**



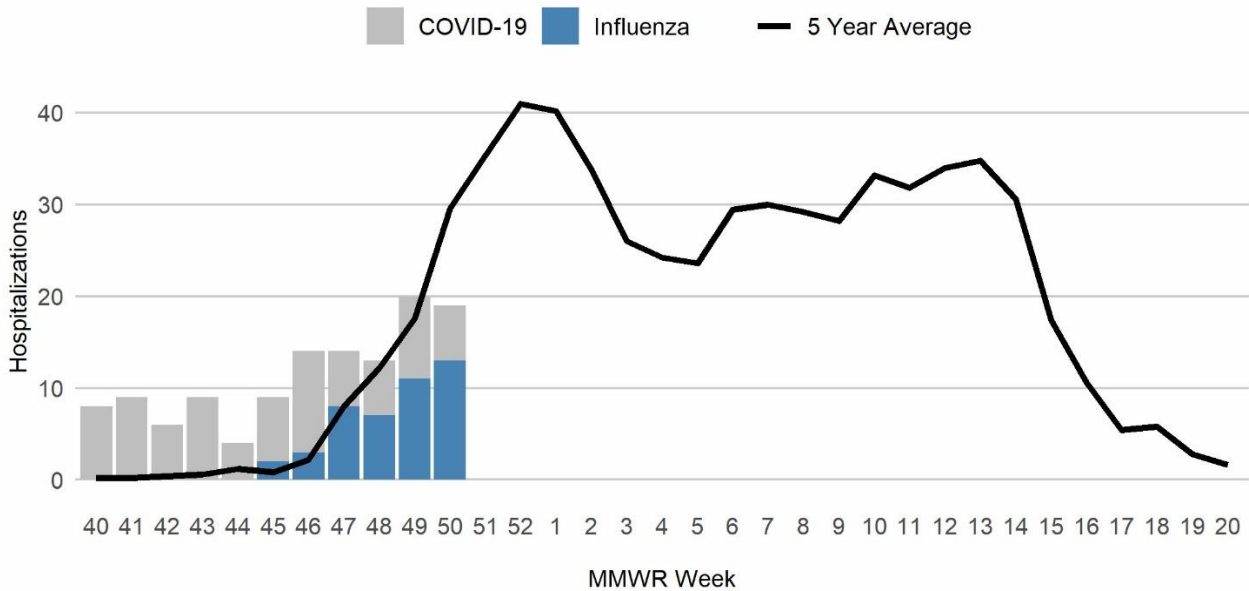
<b>LOW</b> < 1.88%	<b>MODERATE</b> 1.88% - 1.94%	<b>HIGH</b> 1.94% - 1.99%	<b>VERY HIGH</b> 1.99% <
-----------------------	----------------------------------	------------------------------	-----------------------------

The proportion of Emergency Room visits for influenza-like illnesses is above the very high threshold and higher than the 5-years average. This week, 49% of the visits were among males. Regarding race and ethnicity, 36% of visits were Black or African American individuals; 20% were among White individuals; and 44% of visits were among other racial groups. Over a third (33%) of visits were among Hispanic or Latin individuals. The median age this week is 5 years.

Data Source: Health Monitoring Systems: EpiCenter 3.5.18. Data extracted on 12/19/2023.  
Low, Moderate, and High intensity thresholds are defined as the 50%, 90%, and 99% Confidence Intervals, respectively, based on the 5-Year Average of previous seasons

## Influenza or COVID-19-Associated Hospitalizations

### Influenza and COVID-19 Hospitalizations 2023-2024 by Week



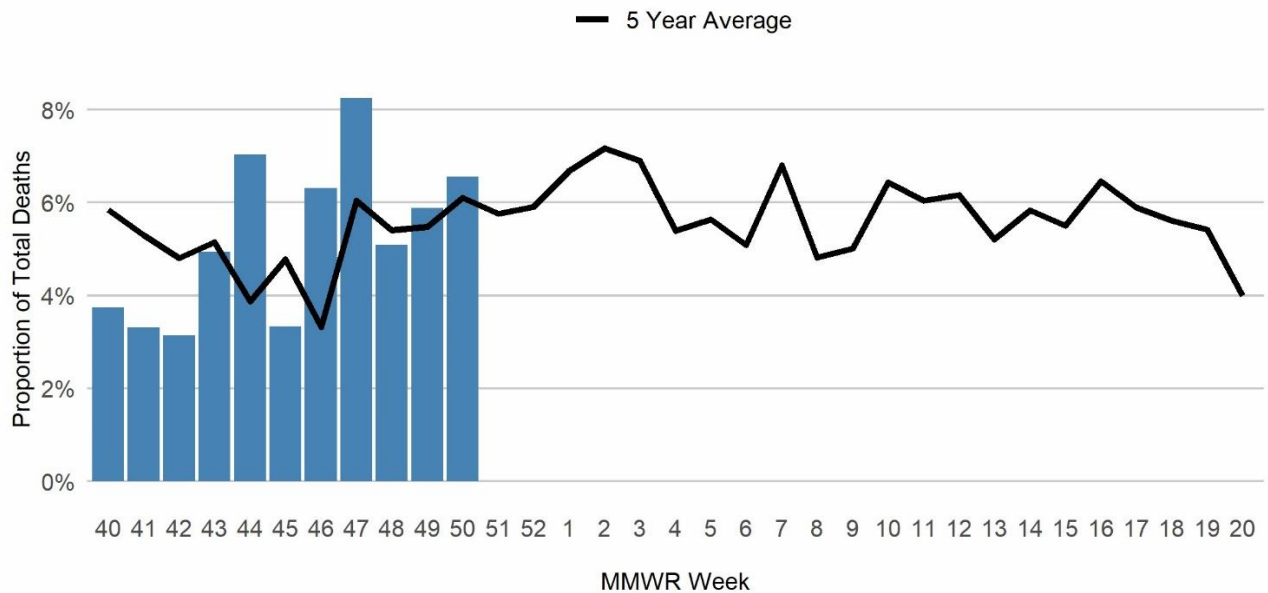
There have been 11 Influenza-Associated Hospitalizations (IAH) reported this week among individuals aged 10 to 90 years. This marks slight increase from the previous week, bringing the total influenza-associated hospitalizations for the season to 44. COVID-19 has accounted for more hospitalizations so far this fall. COVID-19 hospitalizations remained consistent, with 6 reported during the current week. These hospitalizations were among Cleveland residents aged 54 to 74 years.

Data Source: Ohio Department of Health: Ohio Disease Reporting System. Data extracted on 12/19/2023. Data are preliminary and subject to change as more information is gained.

Low, Moderate, and High intensity thresholds are defined as the 50%, 90%, and 99% Confidence Intervals, respectively, based on the 5-Year Average of previous seasons.

**Pneumonia- & Influenza-Associated Deaths\***

**Influenza, COVID-19, and Pneumonia Deaths 2023-2024 by Week**



<b>LOW</b> < 6.02%	<b>MODERATE</b> 6.02% - 6.19%	<b>HIGH</b> 6.19% - 6.34%	<b>VERY HIGH</b> 6.34% <
-----------------------	----------------------------------	------------------------------	-----------------------------

There have been 19 deaths this reporting week due to pneumonia or influenza-related illnesses (P&I). The proportion of P&I deaths is above the high threshold this week. This week, the data shows there was not an influenza or COVID-19-related death, however, there have been 5 COVID-19-related deaths and one influenza death since the beginning of October. The majority P&I deaths that occurred this week were among individuals aged 45 years and older.

Data Source: Cleveland Department of Public Health Department of Vital Statistics. Data compiled on 12/19/2023. Data are preliminary and subject to change as more information is gained.

\*Deaths represent all deaths for Cuyahoga County. All other data presented are City of Cleveland-specific.

Low, Moderate, and High intensity thresholds are defined as the 50%, 90%, and 99% Confidence Intervals, respectively, based on the 5-Year Average of previous seasons.