



Week 12 Highlights

The weekly influenza watch summarizes the flu activity in the City of Cleveland. The metrics in this report include the number and percentage of emergency department visits for influenza-like illness, confirmed flu hospitalizations, and deaths reported each week due to pneumonia or influenza.

- This week, flu activity is classified as “Low.”
- 1.48% of emergency department visits were for flu-like illness.
- There were 21 confirmed cases of influenza-associated hospitalizations reported this week. There have been 794 influenza-associated hospitalizations so far this season.
- 7.45% of deaths* reported were due to pneumonia. Seven influenza deaths were reported this week bringing the season total to 72.

Flu Intensity: Low

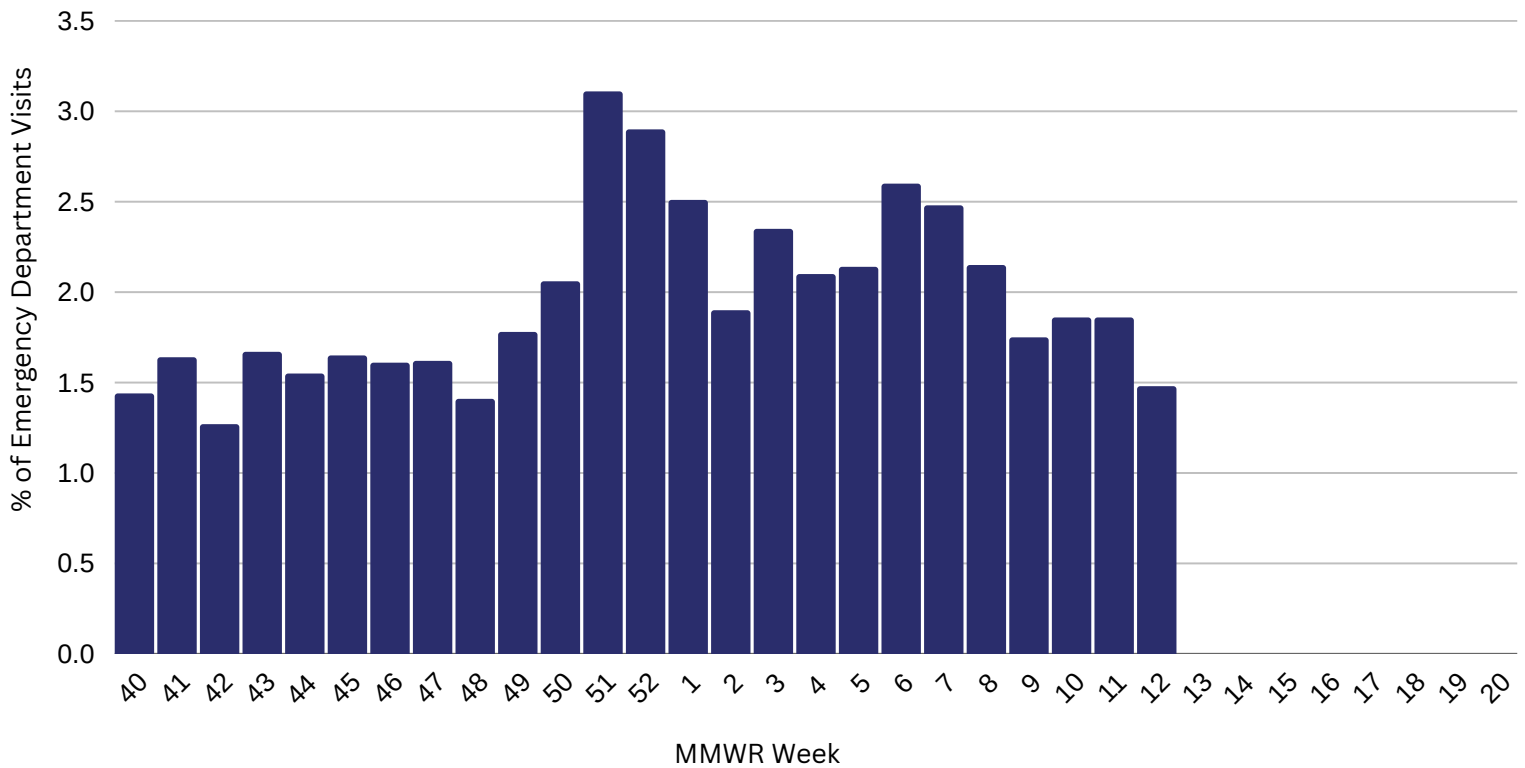
Influenza Intensity Indicators	This Week n (%)	Activity Compared to Last Week	Season Total n (%)
Emergency Department visits for Influenza-like Illnesses	96 (1.48%)	-0.42%	3,038 (2.00%)
Confirmed Influenza Hospitalizations	21	-14	788
Pneumonia- & Influenza-related Deaths	27 (7.78%)	+1.73%	431 (5.72%)

**Deaths represent all deaths for Cuyahoga County. All other data presented are City of Cleveland-specific. Data are preliminary and subject to change as more data is reported. The three indicators for calculating the intensity thresholds are based on 2017 methodology from the Centers for Disease Control and Prevention.*



Influenza-like Illnesses (ILI)

Percentage of Emergency Department visits for ILI by Week, 2024-2025



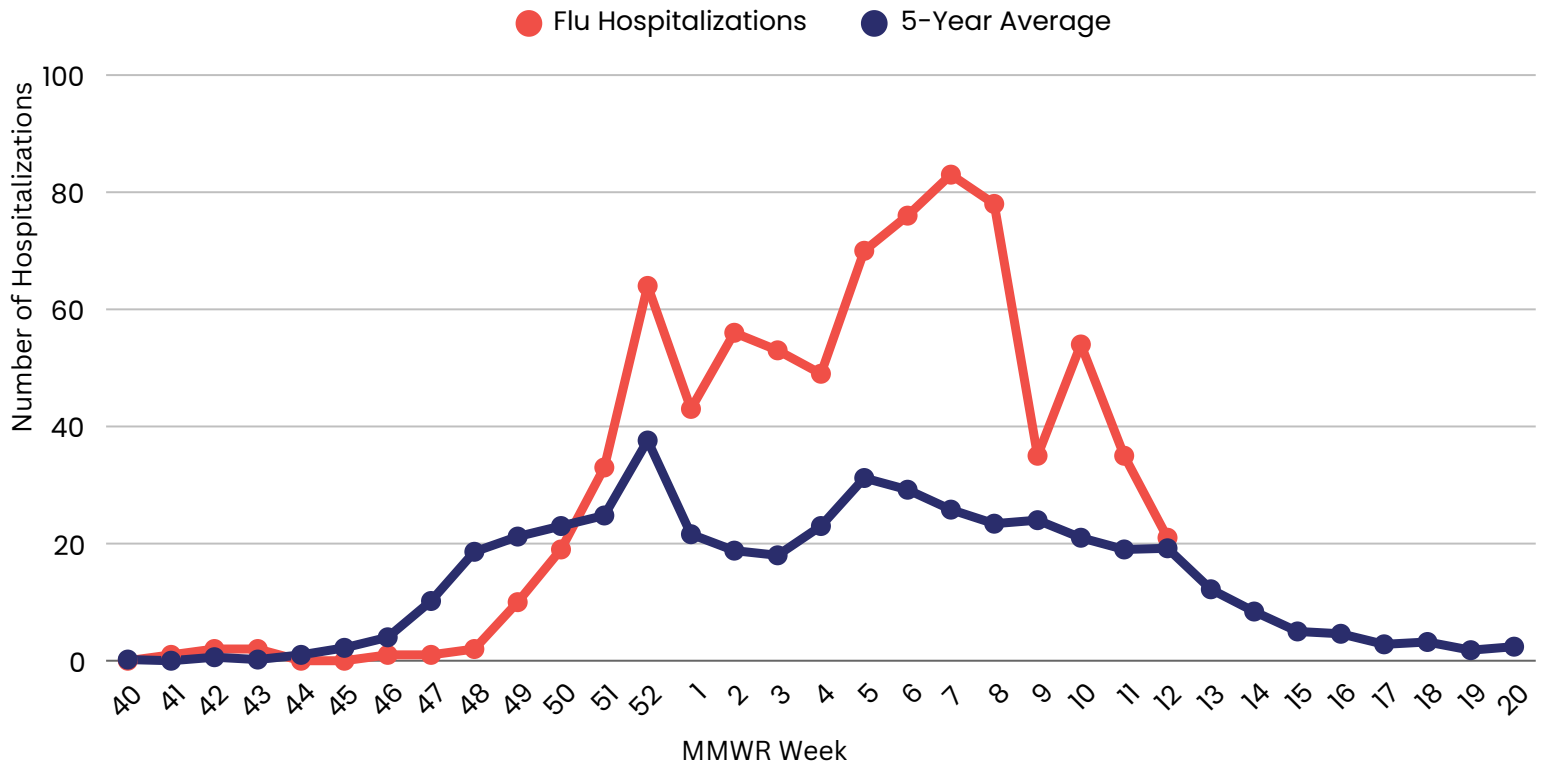
The proportion of emergency department visits for influenza-like illnesses is below the low threshold and lower than 5-years average. This week, 52% of the visits were among males. Regarding race and ethnicity, 48% of visits were Black or African American individuals; 24% were among white individuals; and 28% of visits were among other racial groups. Twenty-four percent of visits were among Hispanic or Latino individuals. The median age this week is 6 years old.

**Data Source: Health Monitoring Systems: EpiCenter 3.5.18. Data extracted on 3/28/2025. Low, Moderate, and High intensity thresholds are defined as the 50%, 90%, and 99% Confidence Intervals, respectively, based on the 5-Year Average of previous seasons*



Influenza Hospitalizations

Number of Flu Hospitalizations by Week, 2024-2025



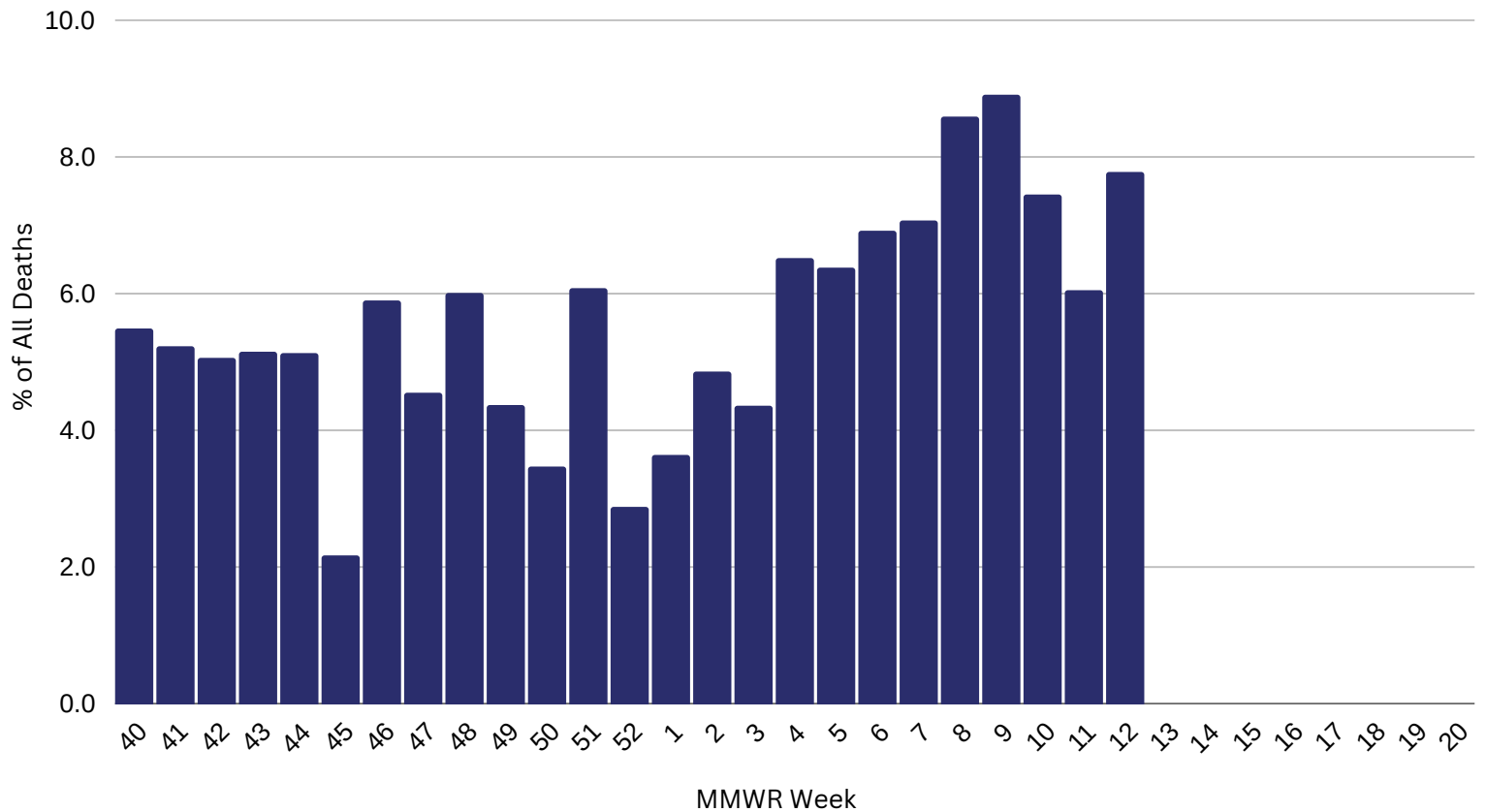
There were 21 influenza-associated hospitalizations (IAH) this reporting week, bringing the total for the season to 788 since the beginning of October. Flu hospitalizations were low this reporting week and comparable to the 5-year average. Influenza A is currently the predominant strain that is circulating this season. This week flu-associated hospitalizations primarily affected residents over 60 years old.

**Data Source: Ohio Department of Health: Ohio Disease Reporting System. Data extracted on 3/28/2025. Data are preliminary and subject to change as more data is reported. Low, Moderate, and High intensity thresholds are defined as the 50%, 90%, and 99% Confidence Intervals, respectively, based on the 5-Year Average of previous seasons.*



Pneumonia- & Influenza-Associated Deaths*

Percentage of Deaths Due to Pneumonia or Influenza Reported, 2024-2025



There were 27 deaths reported this week due to pneumonia or influenza-related illnesses (P&I). The proportion of P&I deaths is in the high threshold this week. This week, there were 7 influenza-associated deaths reported bringing the season total to 72. All P&I deaths that were reported this week were among individuals above 50 years of age.

**Data Source: Cleveland Department of Public Health Department of Vital Statistics. Data compiled on 3/28/2025. Data are preliminary and subject to change as more data is reported.*

**Deaths represent all deaths for Cuyahoga County. All other data presented are City of Cleveland-specific.*

Low, Moderate, and High intensity thresholds are defined as the 50%, 90%, and 99% Confidence Intervals, respectively, based on the 5-Year Average of previous seasons.