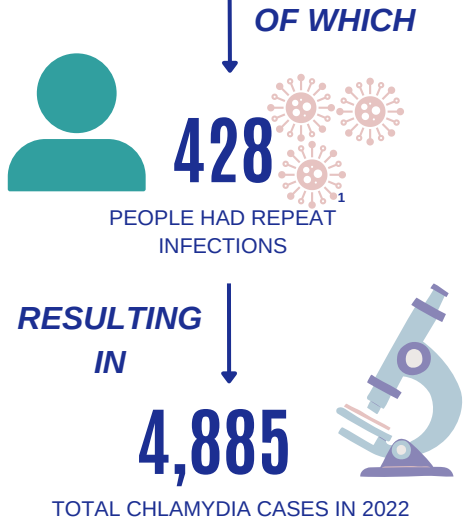
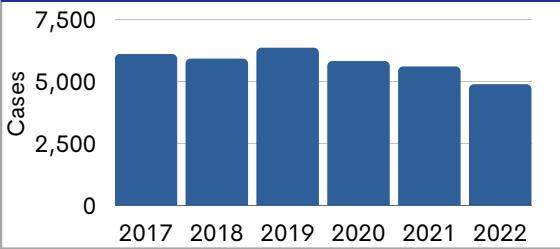


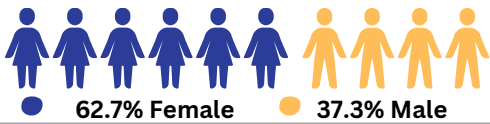
INCIDENCE OF CHLAMYDIA IN CLEVELAND, OH 2022



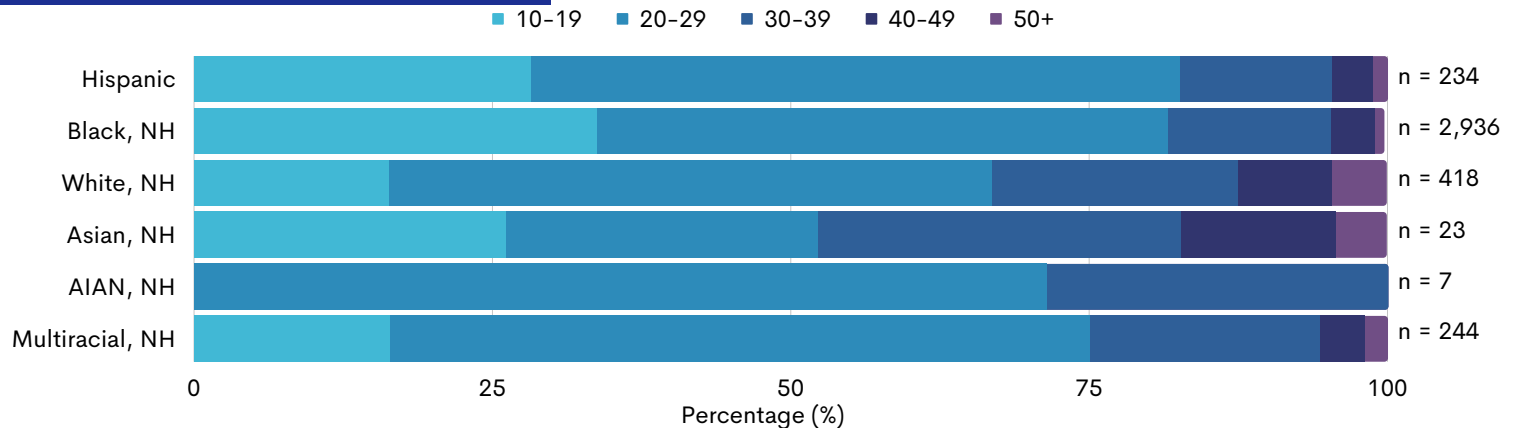
CASES BY YEAR



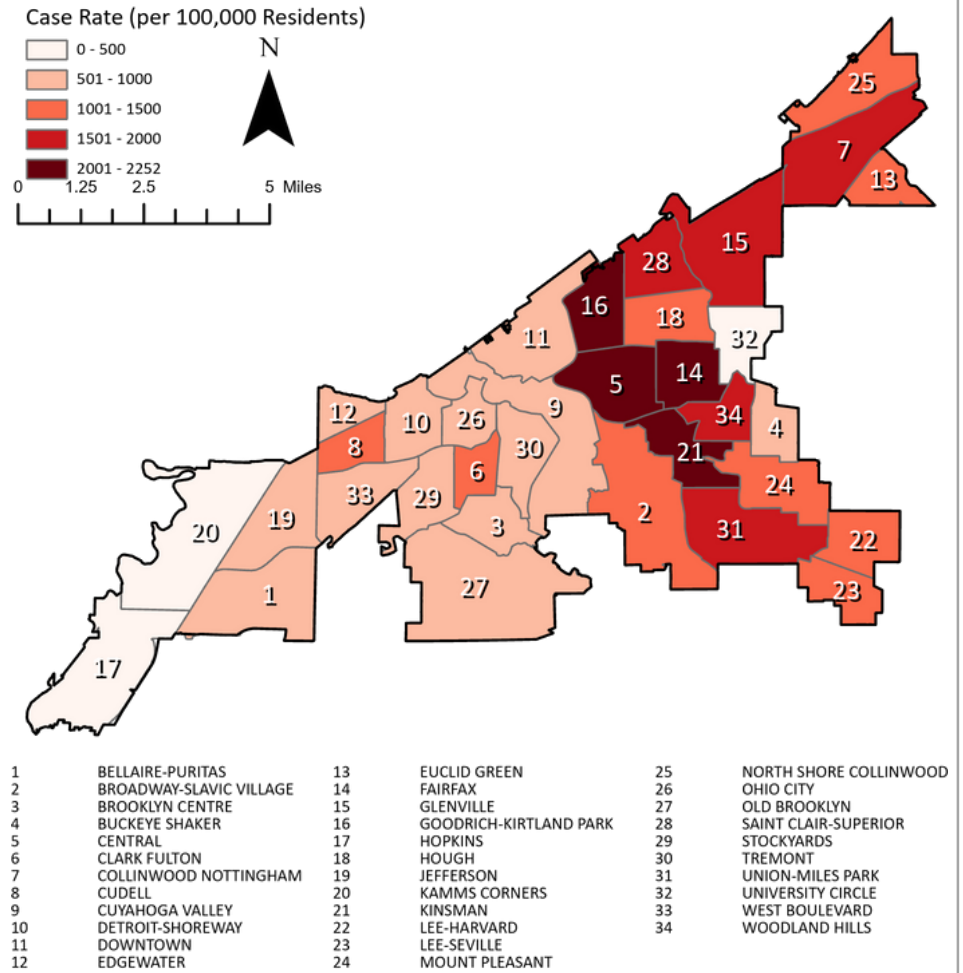
SEX



RACE & AGE ³



CASE RATE BY NEIGHBORHOOD



*Source: Ohio Department of Health - Ohio Disease Reporting System. The Department disclaims responsibility for any analyses, interpretations, or conclusions.

**Cleveland Population Data from 2021 5-year American Community Survey.

1. Reinfections defined as a Resident's second infection of Chlamydia in 2022.

2. Based off a count of 5606 Chlamydia Infections in 2021.

3. NH denotes Non-Hispanic (eg. Black, NH = Black, Non-Hispanic), "AIAN, NH" denotes "American Indian(Native American)/Alaskan Native, non Hispanic".